

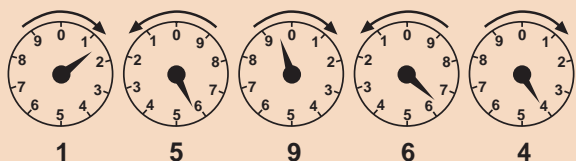
Meter reading instructions:

It's easy to read your own meter once you learn a few tricks.

- Most meters have five dials but some have only four. The pointer on each dial moves in the opposite direction from the pointers on the dials next to it, so be careful.
- If the pointer is between two numbers, record the **lower** of the two numbers.
- **If the pointer is directly on a number**, look at the dial to the right. If the pointer on that dial has passed "0", record the **number the pointer is on**.



- The reading for the meter above is 16064.
- If the pointer has **not** passed "0", **record the next lowest number** on the dial you are recording.



- The reading for the meter above is 15964.

If you subtract the last reading you took from the one you take today, the result is the number of kilowatt-hours of electricity you've used since the previous reading.

Did You Know?

Most electric meters have a disk that spins. The more power your house is demanding, the faster that disk spins, and the faster the pointers on the dials move. Even when you're not at home your house uses electricity to run your refrigerator and other electric appliances. For information about how to keep track of your electricity use and how to use less electricity and save money, please call the Conservation Help Line at **(206) 684-3800** or visit our Web site at www.seattle.gov/light/conserve. If you are wondering how much electricity an **average** SCL customer uses in a month, see the chart below.

Average Monthly Residential Electrical Use

Single-family home with electric space and water heat1,545 kWh

Single-family home with electric water heat only956 kWh

Single-family home with no electric space or water heat766 kWh

Apartment with electric space and water heat710 kWh

Apartment with electric water heat only694 kWh

Apartment with no electric space or water heat355 kWh

Source: 2000 Residential Customer Characteristics Survey



700 5th Avenue, Suite 3300
Seattle, WA 98104-5031
Utilities Call Center (206) 684-3000
Out-of-Area Calls Only (800) 862-1181
<http://www.seattle.gov/light>

Your Electric Meter



Electric Meter Basics

Electric meters measure a customer's electric energy use in kilowatt-hours.

In single-family residences, most meters are on the outside of the house where meter readers can have easy access to them.

You can find your meter by following the electricity lines from the pole to where they connect to your house. Usually this is near your fuse or circuit breaker box. For apartments and commercial buildings, ask your building manager where the meter is, as it may be more difficult to find.

Seattle City Light owns and maintains the electric meter. Of the thousands of meters SCL checks each year, less than 1 percent are inaccurate, and most of those meters are running too slowly.

Meter Reading

Our employees read the meters on a regular schedule, usually every two months. Please help them do their jobs by keeping plants, tools, building materials and other items at least three feet away from the meter. Remember - if you can't see the meter numbers and dials, the City Light meter reader probably can't either.

Locked Doors:

If your meter is accessible only with a key, please call **(206) 386-1731** to make arrangements for access. Many customers give us a key, which we keep locked in a secure place. For your convenience, we will even pick up the key from you.

If we are unable to read the meter, we will estimate how much electricity you've used based on previous consumption history at your address. As soon as we can, we will read your meter and correct any billing inaccuracies that occurred.

Meter Identification Number

You may want to look at your meter to make sure that the identification number matches the one printed on your bill in the "Detailed Billing Information" section. If you live in an apartment, you may have to check the identification number to determine which meter is yours. The meter identification number is generally five or six digits and in larger, bolder print. Older models may have only four digits.



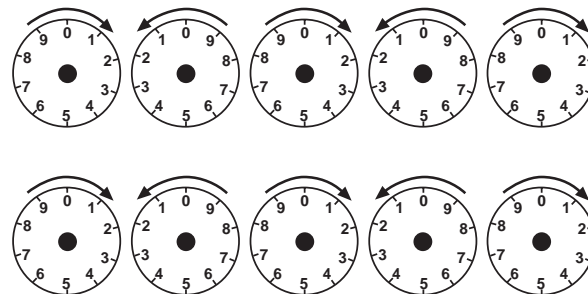
Opening and Closing Your Account

When you open or close your Seattle City Light account, we will need to figure out how much electricity has been used since

the last meter reading. There are several methods to choose from:

- You can look at the meter, then call to tell us where the pointers are positioned on the dials. A City employee will record this information and calculate the consumption.
- We can estimate the consumption.
- For a fee, a City Light meter reader can come out and read your meter.

You may use the blank meter dials below to record the positions of the pointers. This may be useful when you open or close your account, or if you inquire about your electricity consumption.



For help with your account, please call **(206) 684-3000** or visit the Web at www.seattle.gov/light/accounts/resa/.

Understand Your Electricity Use

By reading your meter regularly, you will get an idea of how much electricity you use between regular City Light readings. If you get a bill that seems unusually high, read your meter and compare the reading with the "Current Reading" number printed on your bill.